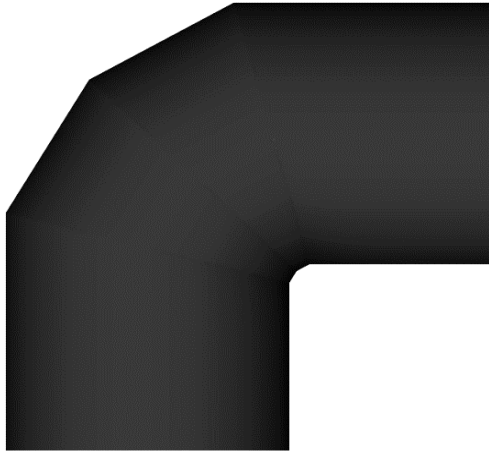


EPDM Insulation Jackets - 90° LR Elbows

For Standard Long-Radius Elbow Fittings



PRODUCT

Mitred elbows made from Aeroflex Standard EPDM Insulation for use in refrigeration and HVAC applications. Designed to fit standard long-radius elbow fittings. Meets 25/50 Fire and Smoke rating and has a working temperature range from -70 °F to 257 °F

INSULATION SPECS

Material: Low-density EPDM closed cell elastomeric foam, CFC and HCFC gas free.

Thermal Conductivity: 0.235 (BTU * in/h *ft² * °F) at 75°F.

Water Vapor Permeability: <0.03 perm-in. (4.38 x 10⁻¹¹g/Pa*s*m) per ASTM E96.

Water Absorption: <0.2% by volume per ASTM C 209.

Working Temperature: -70 °F to 257 °F (-57 °C to 125 °C) continuous per ASTM C 411.

Surface Burning Characteristics: Meets 25/50 Flame-Spread/Smoke-Generated per UL 723 and ASTM E84. Additionally meets UL-94 5 V-A, V-0 and is self-extinguishing per ASTM D 635.

UV Resistant: EPDM provides UV Resistance in accordance with ASTM G7/G90.

Ozone Resistant: Meets ASTM D 1171.

Color: Black

Thickness: 1/2", 3/4", 1", 1-1/2", and 2" available.

SPECIAL FEATURES

ASTM E84 (25/50) compliant: Flame-Spread index under 25 and Smoke Development Index under 50 (tested according to ASTM E84).

Ozone Resistant: Provides ozone resistance in accordance with ASTM D 1171.

Non-Polar: Non-Corrosive to copper and stainless steel and helps repel water vapor.

NOTE: Quantities are estimates only. Contractor is responsible for quantities required on project.

Qty.	Product #	Tube Size	Insulation Thickness	R Value	Qty.	Product #	Tube Size	Insulation Thickness	R Value	Qty.	Product #	Tube Size	Insulation Thickness	R Value
	EL3812LR	3/8"	1/2"	3.6		EL3810LR	3/8"	1"	8.9		EL3820LR	3/8"	2"	21.9
	EL1212LR	1/2"	1/2"	3.4		EL1210LR	1/2"	1"	8.2		EL1220LR	1/2"	2"	20.2
	EL5812LR	5/8"	1/2"	3.2		EL5810LR	5/8"	1"	7.7		EL5820LR	5/8"	2"	18.9
	EL3412LR	3/4"	1/2"	3.0		EL3410LR	3/4"	1"	7.3		EL3420LR	3/4"	2"	17.9
	EL7812LR	7/8"	1/2"	2.9		EL7810LR	7/8"	1"	7.0		EL7820LR	7/8"	2"	17.1
	EL11812LR	1-1/8"	1/2"	2.8		EL11810LR	1-1/8"	1"	6.5		EL11820LR	1-1/8"	2"	15.9
	EL13812LR	1-3/8"	1/2"	2.6		EL13810LR	1-3/8"	1"	6.2		EL13820LR	1-3/8"	2"	15.0
	EL15812LR	1-5/8"	1/2"	2.6		EL15810LR	1-5/8"	1"	5.9		EL15820LR	1-5/8"	2"	14.3
	EL21812LR	2-1/8"	1/2"	2.5		EL21810LR	2-1/8"	1"	5.6		EL21820LR	2-1/8"	2"	13.2
	EL3834LR	3/8"	3/4"	6.2		EL38112LR	3/8"	1-1/2"	15.1					
	EL1234LR	1/2"	3/4"	5.7		EL12112LR	1/2"	1-1/2"	13.9					
	EL5834LR	5/8"	3/4"	5.3		EL58112LR	5/8"	1-1/2"	13.0					
	EL3434LR	3/4"	3/4"	5.0		EL34112LR	3/4"	1-1/2"	12.3					
	EL7834LR	7/8"	3/4"	4.8		EL78112LR	7/8"	1-1/2"	11.8					
	EL11834LR	1-1/8"	3/4"	4.5		EL118112LR	1-1/8"	1-1/2"	10.9					
	EL13834LR	1-3/8"	3/4"	4.3		EL138112LR	1-3/8"	1-1/2"	10.3					
	EL15834LR	1-5/8"	3/4"	4.2		EL158112LR	1-5/8"	1-1/2"	9.9					
	EL21834LR	2-1/8"	3/4"	4.0		EL218112LR	2-1/8"	1-1/2"	9.2					